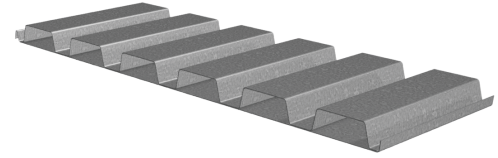


PLBCD/HSBCD/BCD CELLULAR DECK GRADE 50 STEEL

ASD

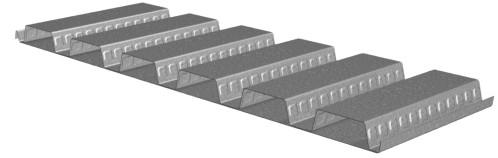
B CELLULAR ROOF DECK

- PLBCD-36 Deck used with PunchLok® II System
- HSBCD-36 Deck used with TSWs or BPs

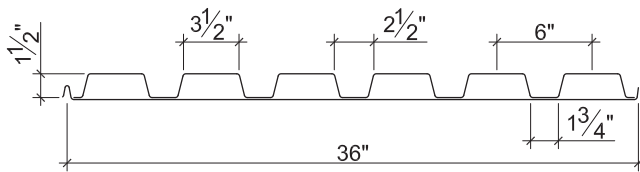


B CELLULAR FORMLOK® COMPOSITE DECK

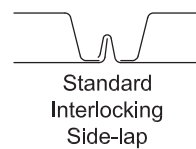
- PLBCD-36 FormLok Deck used with PunchLok® II System
- BCD-36 FormLok Deck used with TSWs or BPs



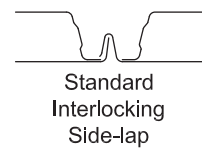
Nominal Dimensions



PLBCD-36 or HSBCD-36



PLBCD-36 or BCD-36 FormLok



Section Properties

Deck Gage	Deck Weight w_{dd} (psf)	Base Metal Thickness t (in.)	Yield Strength F_y (ksi)	Effective Moment of Inertia at Service Load $I_d = (2I_e + I_g)/3$		Effective Section Modulus at $F_y = 50$ ksi		Vertical Web Shear V_n/Ω (lb/ft)	Vertical Shear V_n/Ω	
				I_{d+} (in ⁴ /ft)	I_{d-} (in ⁴ /ft)	S_{e+} (in ³ /ft)	S_{e-} (in ³ /ft)		End (lb/ft)	Interior (lb/ft)
20/20	3.6	0.0359/0.0359	50	0.416	0.336	0.279	0.382	3220	340	511
20/18	4.1	0.0359/0.0478	50	0.454	0.375	0.287	0.428	3220	318	369
18/20	4.1	0.0478/0.0359	50	0.535	0.419	0.417	0.453	4264	369	612
18/18	4.6	0.0478/0.0478	50	0.587	0.462	0.428	0.552	4264	517	667
18/16	5.1	0.0478/0.0598	50	0.631	0.512	0.437	0.575	4264	491	524
16/18	5.3	0.0598/0.0478	50	0.704	0.547	0.587	0.629	5302	549	757
16/16	5.8	0.0598/0.0598	50	0.759	0.599	0.599	0.700	5302	717	820

Allowable Reactions at Supports Based on Web Crippling, R_n/Ω (lb/ft)

Deck Gage	Bearing Length of Webs											
	One-Flange Loading						Two-Flange Loading					
	End Bearing				Interior Bearing		End Bearing				Interior Bearing	
	1 1/2"	2"	3"	4"	3"	4"	1 1/2"	2"	3"	4"	3"	4"
20/XX	1188	1301	1492	1609	2189	2339	1316	1413	1575	1675	2743	2946
18/XX	2001	2182	2485	2667	3714	3949	2388	2550	2822	2986	4713	5038
16/XX	3006	3264	3698	3954	5604	5935	3775	4015	4419	4657	7164	7627

Standard Features

- ASTM A653 SS GR50 Min., with G60
- Standard lengths – 7'-6" to 30'-0"
- IAPMO UES ER-2018, UL, and FM Listed
- Tables conform to ANSI/SDI RD-2017 and C-2017

Optional Features

- Inquire regarding cost and lead times for:
 - Sheet Lengths > 30'-0"
 - Alternative metallic finishes
- Cellular Acoustical Versions

NOTICE: Design defects that could cause injury or death may result from relying on the information in this document without independent verification by a qualified professional. The information in this document is provided "AS IS". Nucor Corporation and its affiliates expressly disclaim: (i) any and all representations, warranties and conditions and (ii) all liability arising out of or related to this document and the information in it.